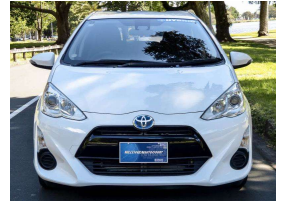
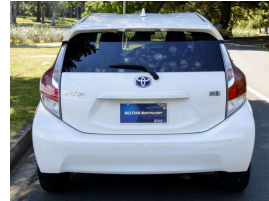


2016 Toyota Aqua S Hybrid REBATE \$1552.90



VEHICLE INFORMATION

Cash Price

Includes GST,
Registration and
licencing

\$16,995

Finance this vehicle from only

\$101.97

per week*

Features / Comments

[Toyota Aqua S (Prius C) Hybrid Electric 2016]

+ This car is currently eligible for the Government's Clean Car Discount of \$1552.90 while available! +

WHY PAY MORE?

* Don't pay \$550 for on-road cost! >>> It's FREE here!
(NO extra or hidden charges.)

BUY WITH CONFIDENCE!

* Don't pay \$620 for a warranty! >>> It's FREE here!
(1year or 10000kms dealer warranty for your peace of mind.)

[Features of Toyota Aqua S 2016]

- Airbags
- New NZ CD DVD Audio System with Bluetooth Audio and Bluetooth Phone Connectivity.
- Toyota Safety Sense EyeSight Drive Lane Departure warning and Pre Accident Mitigation Warning System
- Auto intelligent Headlights
- Certified 78711kms
- Hybrid- Electric engine
- Privacy Glass (tinted glass)
- Anti locking brakes (ABS) excellent safety for wet slippery roads
- Central locking with keyless entry
- Climate control Air conditioning
- Timing chain engine (no cam belt)
- Power windows
- Electric mirrors
- Automatic
- Super Economy Vehicle with EV and Eco Mode
- Great comfortable performance with Exceptional economy
- Very reliable & immaculate condition

Out of town buyer?

No worries! We can arrange the delivery of this vehicle to you. Please call or email us for a quote.

*Finance calculation based on a 48 month term, no deposit and with an example annual fixed interest rate of 9.95%. Actual interest rate may be higher or lower. Includes an establishment fee of \$365 and a monthly maintenance fee of \$2.00. Full term amount payable of \$21,210. Estimate only, not an offer of finance. Terms, conditions and lending criteria apply.

2016 Toyota Aqua Prius C Hybrid Electric car for sale Hamilton

MILLENNIUMAUTOCOURT

Phone 07 846 2005, Email sales@autocourt.co.nz
65 Lake Road, Frankton, Hamilton

*Finance calculation based on a 48 month term, no deposit and with an example annual fixed interest rate of 9.95%. Actual interest rate may be higher or lower. Includes an establishment fee of \$365 and a monthly maintenance fee of \$2.00. Full term amount payable of \$21,210. Estimate only, not an offer of finance. Terms, conditions and lending criteria apply.